

# HOTEL METROPOLITAN

KAWASAKI JR-EAST

## A place where new encounters and stories begin

The theme of Hotel Metropolitan Kawasaki is "A place where encounters and stories begin." Here, various encounters are woven together: encounters with the tradition of being a post town that flourished during the Edo period, encounters with culture such as art and music, and furthermore, with sports and industry.

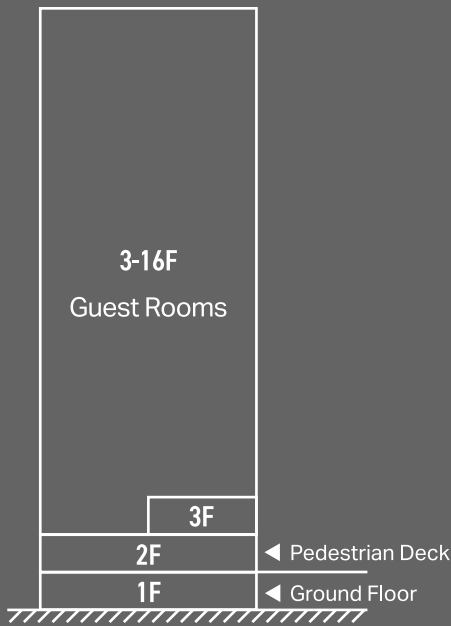


# LOCATION

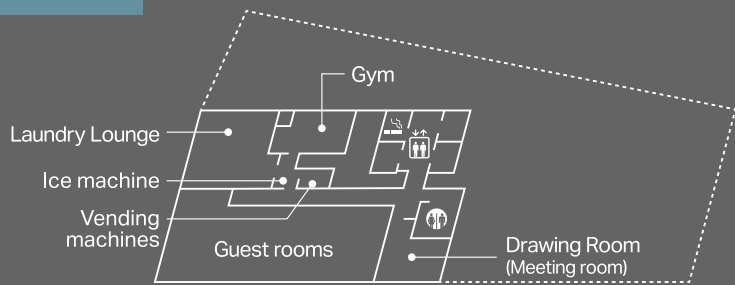
Kawasaki Station is a hub connecting Tokyo, Shinagawa, Yokohama, and Haneda Airport, making it a prime location with easy access in all directions. Kawasaki features attractive sights like Kawasaki Daishi and factory night views. You can enjoy shopping and gourmet food at Lazona Kawasaki Plaza, Atre Kawasaki, Ginryugai, and Nakamise-dori.



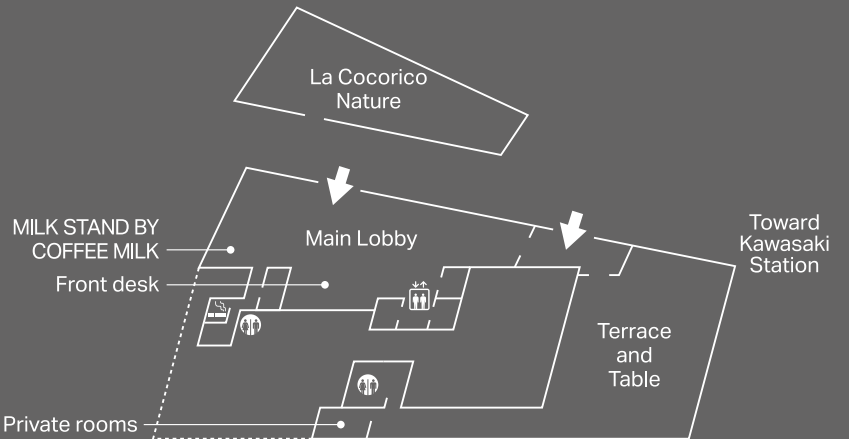
# FLOOR



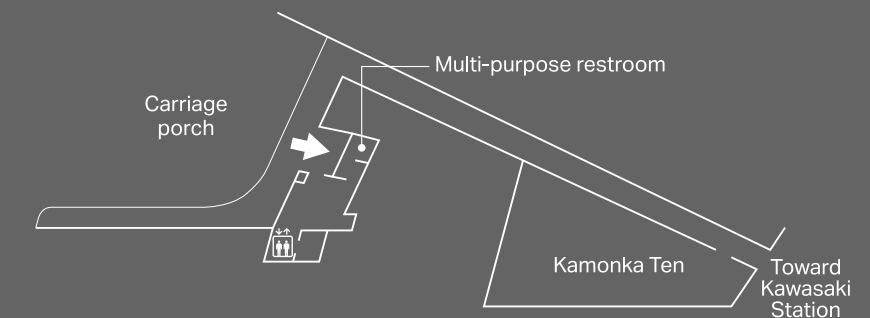
3F



2F



1F



## SYMBOLS

- Entrance
- Restrooms
- Elevators
- Smoking Area

# PARKING

There is parking space for 184 vehicles. \*KAWASAKI DELTA affiliated parking lot.  
 \*Reservations are not accepted. Discounts are available for staying guests and those using Terrace and Table or Kamonka Ten. Please check the official website for details.

# GUEST ROOMS

All 304 guest rooms feature a space design that combines tranquility and brilliance. We promise a comfortable stay with modern and stylish interiors, Simmons beds that lead to high-quality sleep, relaxing bath times, and a full digital environment equipped with Wi-Fi, Chromecast, and various video streaming services.



## QUEEN & TWIN

### High Floor

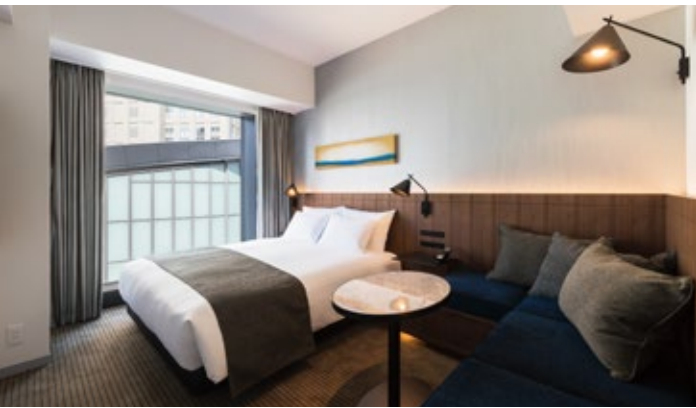
Enjoy a breathtaking view with a sense of openness from the higher floors.

### Urban

Large windows reaching the floor offer views of the station and tracks.

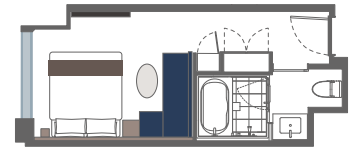
### Standard

Faces the Muza Kawasaki Symphony Hall on the opposite side of the tracks.



### Queen Room

Size 23m<sup>2</sup>, Capacity 1–2 persons, Bed size 160 × 203 cm.



Room type	Floor
High Floor Queen	14~16F
Urban Queen	3~13F
Standard Queen	4~13F

### Twin Room

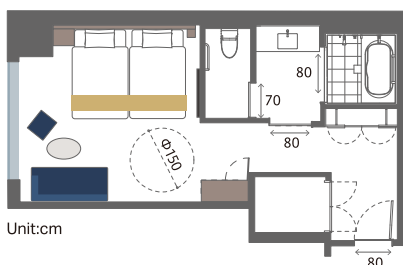
Size 30–31m<sup>2</sup>, Capacity 1–2 persons, Bed size 120 × 203 cm (2 beds)

Room type	Floor
High Floor Twin	14~16F
Urban Twin	4~13F
Standard Twin	4~13F



\*Some rooms can accommodate up to 3 persons using a sofa bed (100 × 200 cm)

## UNIVERSAL



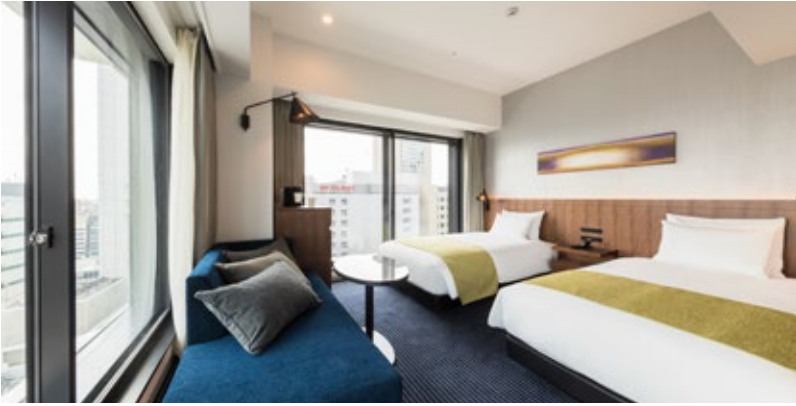
Unit:cm



Barrier-free rooms offer a comfortable stay for everyone, including wheelchair users. The step-free interior features 80 cm wide entrances for the room and bathroom, plus ample turning space.

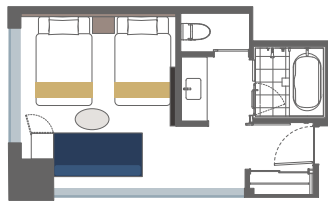
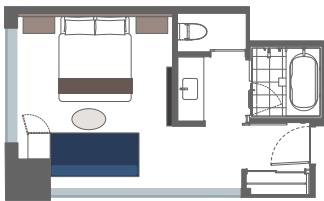
Size 30–31m<sup>2</sup>, Capacity 1–2 persons, Bed size 120 × 203 cm (2 beds), Floor 3–5F.

# CORNER



From large windows spanning two sides, you can enjoy panoramic views of the Kawasaki cityscape, station, and tracks. All rooms are equipped with a drip coffee maker, and come complete with ReFa "Fine Bubble U" showerheads and "Beautech Dryer Smart Double" hair dryers.

Size 31m <sup>2</sup>	Room type	Bed size	Floor
Capacity 1-2 persons	Urban Corner Queen	160 × 203cm	13~15F
	Urban Corner Twin	120 × 203cm (2 beds)	9~12F



# ADEL SUITE



The coexistence of tranquility and brilliance within a stylish atmosphere creates ultimate luxury. Experience a special time in the 60m<sup>2</sup> Adel Suite.

**Size 60m<sup>2</sup>, Capacity 1-2 persons,**  
**Bed size 140 × 203 cm (2 beds),**  
**Floor 16F.**



# FACILITY



## Laundry Lounge

**3F / For staying guests only**

A social lounge where guests can gather freely while providing laundry functions. It is available 24 hours a day as a workspace or a place for conversation. A microwave is also available.



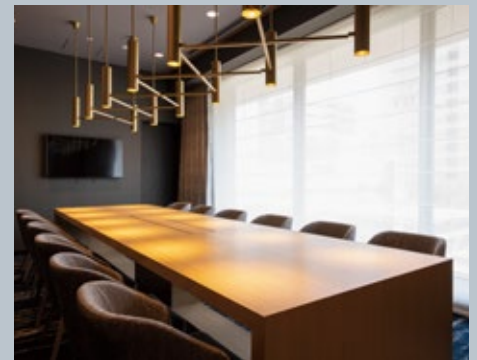
## Gym

**3F / For staying guests only**

A sophisticated space to support the physical and mental refreshment of guests during their stay.

We have introduced professional machines to achieve high-quality workouts. Towels and mineral water are provided.

\*Usage is limited to those 18 years of age and older.



## Drawing Room

**3F / Paid space**

A 26m<sup>2</sup> meeting room for up to 12 people, featuring a 75-inch monitor. Whiteboards are available on request.

\*Can be used alone.

# ALL DAY DINING

## TERRACE *and* TABLE

A Vibrant and Dynamic Culinary Scene.

Our hotel-operated restaurant offers a lively atmosphere centered around breakfast, lunch, and dinner buffets. We also provide a refined tea time menu, terrace barbecues, and full-course meals in private rooms for special occasions. We deliver a diverse range of dining experiences for every guest.



### Breakfast Buffet

Enjoy a balanced buffet of 50 Japanese and Western dishes. At our Live Kitchen, chefs craft omelets with your choice of fillings. Savor a Kawasaki morning featuring fresh, locally sourced Kanagawa ingredients.

Hours 6:30a.m. – 10:00p.m.

### Lunch & Dinner Buffet

Embark on a "culinary voyage" in our dynamic open-kitchen setting. Our buffet features global flavors including French, Italian, Chinese, and Asian cuisines. We also host limited-time regional fairs to showcase diverse culinary charms.

**Hours** Lunch [Weekdays] 11:30a.m.-3:00p.m. (120min.)  
[Weekends] 11:00a.m.-3:10p.m. (100min.)  
Dinner [Weekdays] 5:30p.m.-9:30p.m.  
[Weekends] 5:00p.m.-9:30p.m. (120min.)



### Tea Time

3:00p.m. - 5:00p.m.

We offer an extensive drink menu alongside à la carte desserts and snacks. Perfect for a relaxing afternoon break or a casual business meeting.

### Barbecue

3:00p.m. - 9:00p.m.

Enjoy a self-service BBQ on our open terrace with chef-selected ingredients. Our staff handles all preparation, charcoal, and cleanup for you.

### Course

We serve full-course French cuisine in private dining rooms. Recommended for anniversaries, celebrations, or hosting important guests.

# VARIOUS RESTAURANTS & BAR



## Dim Sum & Yum Cha: "Kamonka Ten"

This restaurant focuses on dim sum, sweets, and yum cha. Inheriting the authentic flavors of the original brand, Kamonka Ten is a sophisticated dining space where delicious taste meets health-conscious cooking.

**Floor** 1F **Hours** 11:30a.m.-3:00p.m. / 5:00p.m.-10:00p.m.  
**Closed** Open daily **Capacity** 104 seats (9 private rooms)  
**Tel** +81 44-280-6628 **Operator** RAMLA Co., Ltd.



## Cafe & Rotisserie "La Cocorico Nature feat. Hitachino Nest Beer"

Our specialty is rotisserie chicken, perfectly paired with an exclusive selection of drinks. We offer original craft beers found only here, a wide variety of draft beers, and carefully curated natural wines.

**Floor** 2F **Hours** 11:30a.m.-11:00p.m.  
**Closed** Open daily **Capacity** 69 indoor seats / 28 terrace seats  
**Tel** +81 44-330-6331 **Operator** RY Corporation Inc.



## MILK STAND BY COFFEE MILK

A premium coffee stand in the hotel lobby designed to provide a moment of relief in a busy day. Enjoy high-quality coffee, tea, and specialty milk drinks, along with light snacks and desserts to satisfy your soul.

**Floor** 2F **Hours** 9:00a.m.-7:00p.m. (Until 8:00p.m. on Fridays)  
**Closed** Open daily **\*Takeout only**  
**Tel** +81 90-3283-8405 **Operator** salt consortium inc.

# ART & MUSIC



## ART

In addition to five permanent art installations, the lobby features "Seasonal ART" exhibitions that change with the time of year.



## Friday Music Night

Every Friday from 7:00 p.m., enjoy live music in the lobby. Performers change weekly, offering a fresh musical backdrop for your evening.

## Hotel Metropolitan Kawasaki

1-5 Omiyacho, Saiwai-ku, Kawasaki-shi, Kanagawa 212-0014 +81 44-533-1111

### Access

- JR Kawasaki Station: 2-min walk via West Exit deck (Tokaido, Nambu, Keihin-Tohoku Lines).
- Keikyu Kawasaki Station: 9-min walk.
- Haneda Airport: 21 min via Keikyu Line to Keikyu Kawasaki Station.
- Narita Airport: 80 min via Narita Express to Shinagawa, then JR Tokaido Line to Kawasaki Station.

Note: Information is current as of April 2026. Details are subject to change due to facility inspections or other circumstances.

